
TRAVEL INFORMATION
FOR RESIDENTS OF
LANGFORD MILLS,
TAUNTON



CONTENTS.

Introduction	1
About this Travel Information Pack	2-3
Walking	4
Cycling	5
Walking/Cycling Route Plan	6-7
Public Transport - Bus	8-9
Town Centre Bus Map	10-11
Public Transport - Trains	12-13
Transport for People with Mobility Problems	14-15
Taxi / Uber	16
Car Sharing	17
Driving	18
Electric Vehicles	19
Shopping	19
Journey Planners	20
Amenities and Information	21

INTRODUCTION.

What is a Travel Plan?

A Travel Plan is a package of measures that aim to encourage more sustainable travel choices where and when possible as well as monitor the progress. The Smarter Travel Pack has been specifically designed for you, to help demonstrate the options available to and from your home at Langford Mills, Taunton.

Claim your Sustainable Travel Voucher Today

Green Travel Vouchers (value of £400 per dwelling) are available to the first occupants of every dwelling at the time of the first occupation. These vouchers will provide for reimbursement up to the sum of £400 upon submission of receipts proving purchase of qualifying items associated with sustainable travel.

**CONTACT YOUR TRAVEL
PLAN COORDINATOR
FOR DETAILS**
langfordmillstpc@hydrock.com



WELCOME.

What is a Travel Plan?

St. Modwen Homes has commissioned this leaflet to all new residents of Langford Mills, Taunton, in order to promote awareness of the available local services, facilities and sustainable travel options.

With great services, facilities and amenities with Taunton town centre nearby and convenient transport links, Langford Mills is in a great location for your new home. This Travel Information Pack (TIP) contains useful information about your travel options in and around Taunton. By changing your travel habits even slightly, there are many benefits which can be gained:

- Reduced travel costs
- Improved health through increased fitness and reduced stress
- A cleaner environment
- Increased road safety
- Reduced congestion
- Reduced CO₂ emissions and better air quality.

What is a Travel Plan?

This leaflet will provide you with tools to achieve greater levels of sustainable travel, making the most of the sustainable options available to you. This will have significant benefits not only for individuals, but also on the wider community and environment.

What Options are Available to you?

- Walking – Highly sustainable, healthy and carbon-neutral
- Cycling – Sustainable, healthy and a great way to beat the morning traffic
- Public transport – Let someone else do the driving for you!
- Working from home – A low-impact alternative
- Driving – We recognise that sometimes you need to drive. Why not share your journey with a colleague? Remember to anticipate hazards - gentler use of controls contributes to fewer harmful emissions.



WALKING.

Walking is a great way to improve your health and fitness. It has been shown to reduce stress, increase productivity and energy levels and improve sleep. And walking is free, reliable and a simple way to introduce daily exercise into your life – no matter your age or fitness!

Walking is an important mode of transport for many people. It requires no specialist equipment and walking routes are all around Taunton. They include well-lit footways for trips into town, to bus stops etc, and include some fabulous leisure walks on the local footpaths.

St. Modwen Homes has provided good quality, direct and well-lit footpaths and pavements throughout the Langford Mills development. These routes connect to existing pavements which provide access to bus stops, shops and leisure areas. Taunton has a full range of services facilities and amenities within the town centre including a number of high street shops, restaurants/ coffee shops, supermarkets, Marks & Spencer, library, opticians, pharmacies, banks, barbers/ hairdressers, dental surgeries and much more! There are also the Orchard and County Walk shopping centres, both located in the heart of Taunton town centre, providing a collection of shops, cafes, restaurants and services under one roof. Visit www.orchardtaunton.co.uk and www.countywalk.co.uk.

Need More Walking Ideas?

- Check out the health benefits of walking and information on walks and trails within Somerset and in particular Taunton on the Travel Somerset website www.travelsomerset.co.uk.
- Have a look at suggestions of things to do within Taunton including information on walking/routes in Taunton Deane via the Visit Somerset website www.visitsomerset.co.uk.
- Walking for Health's website www.walkingforhealth.org.uk.

USEFUL APPS & INFO

Strava (Android and iOS)
MapMyWalk (Android and iOS)
Pedometer (Android and iOS)
iFootpath (Android and iOS)

A simple pedometer/ fitness tracker can count how many steps you walk each day. In addition to this, many smartphones have apps which can not only count your steps but calculate your distance walked, calories burned and walking time.

CYCLING.

Two wheels can be better than four! Cycling is a quick, cheap and fun way to get from A to B. It is one of the easiest ways to fit exercise into your daily routine and is an ideal way to explore your new neighbourhood as well as further afield.

Cycle With Confidence

- Get free cycle training - free cycle confidence sessions for children and adults are available in your area – see www.somersetroadsafety.org.
- Do a trial run before you cycle to work or to local services and facilities for the first time to familiarise yourself with the route and timings.
- For travelling to work, ask your employer about the Cycle to Work Scheme (www.cyclescheme.co.uk) - you might be entitled to a tax-free bike and accessories.

Bike and Ride

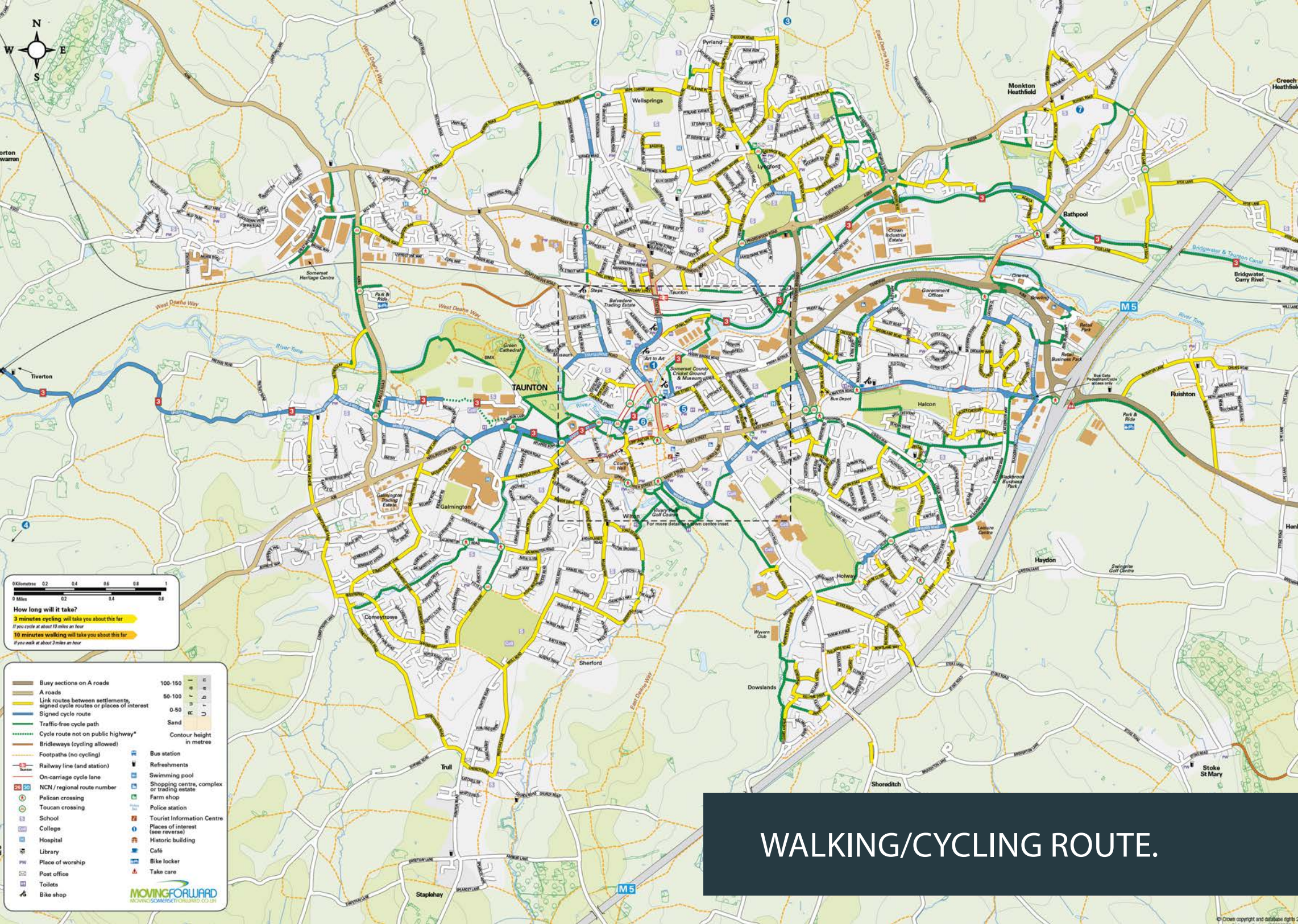
You've heard of Park and Ride, but have you ever thought about Bike and Ride? For commuting trips, even if you can't cycle the whole way to work, perhaps you could consider cycling some of the way and using public transport for the remaining journey. Taunton railway station has secure cycle parking, with stands available within the station car park. Sheltered cycle storage is available providing 82 cycle storage spaces in total, which are covered by CCTV, allowing for plenty of safe and convenient storage for that extra peace of mind. There are lots of local leisure rides too.

Have a look at the Somerset County Council cycle maps (www.somerset.gov.uk/environment-and-planning/rights-ofway/walking-and-cycling-maps/) for inspiration. Visit www.orchardtaunton.co.uk and www.countywalk.co.uk.

USEFUL APPS

Strava (Android and iOS)
Mapmyride (Android and iOS)
Cyclemeter (iOS only)
National Cycle Network (Android and iOS)





0 Kilometres 0.2 0.4 0.6 0.8 1
 0 Miles 0.2 0.4 0.6 0.8 1

How long will it take?
3 minutes cycling will take you about this far
If you cycle at about 10 miles an hour
10 minutes walking will take you about this far
If you walk at about 2 miles an hour

- | | |
|--|--|
| <ul style="list-style-type: none"> Busy sections on A roads A roads Link routes between settlements, signed cycle routes or places of interest Signed cycle route Traffic-free cycle path Cycle route not on public highway* Bridleways (cycling allowed) Footpaths (no cycling) Railway line (and station) On-carriage cycle lane NCN / regional route number Pelican crossing Toucan crossing School College Hospital Library Place of worship Post office Toilets Bike shop | <ul style="list-style-type: none"> 100-150 50-100 0-50 Sand Contour height in metres Bus station Refreshments Swimming pool Shopping centre, complex or trading estate Farm shop Police station Tourist Information Centre Places of interest (see reverse) Historic building Cafe Bike locker Take care |
|--|--|

WALKING/CYCLING ROUTE.

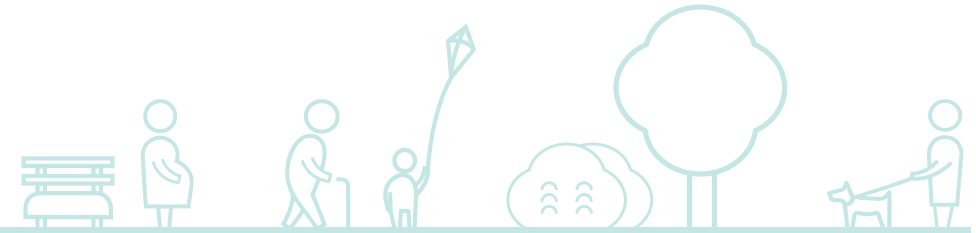
PUBLIC TRANSPORT

BUS.

Why not take advantage of the excellent links that your local bus services provide? After all, your nearest bus stops are less than a five-minute walk away and therefore a suitable distance for everyone, even people with mobility difficulties.

The No. 25 service provides regular (per hour) services between Norton Fitzwarren and Taunton town centre. The buses are accessible for people with mobility issues, comfortable and modern, and provide an excellent link with the town centre and Taunton bus station for further links. There are many advantages to using local bus services. It allows for many people to share trips they might otherwise make individually by car.

By sharing the trips, we can reduce harmful emissions and help sustain a cleaner, healthier environment. The bus is a great option for travelling to destinations not served by trains, for fun and stress-free days out and for avoiding the stress of driving and parking at your destination.

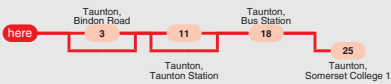


Where are my Bus Stops?

The nearest bus stops are located on the B3227, situated along the northern boundary of the Langford Mead development. A Park and Ride service is also available from the Silk Mills Park and Ride located approximately 1.0km to the south-east. Buses run every 15 minutes to Taunton town centre and Musgrove Park Hospital with an approximate travel time of 7 minutes to the hospital and 13 minutes from the town.

BUS INFO.

25 Taunton - Wiveliscombe - Dulverton Dulverton - Wiveliscombe - Taunton Buses of Somerset



613 Bishops Lydeard - Bridgwater Hatch Green Coaches



The numbers circled indicate approximate timings in minutes from Norton Fitzwarren, Burnhill

Mondays to Fridays Bus times as at 31st January 2019

Time Service Note	Time Service Note	Time Service Note	Time Service Note	Time Service Note	Time Service Note	Time Service Note
0741 613 Col	0802 25 3,Sch	0941 25	1202 25	1452 25	1717 25	2023 25 1
0802 25 SH	0802 25 2,3,Sch	1002 25	1252 25	1517 25	1807 25	

Saturdays Bus times as at 2nd February 2019

Time Service Note	Time Service Note	Time Service Note	Time Service Note	Time Service Note
0802 25	1002 25	1252 25	1517 25	1807 25
0941 25	1202 25	1452 25	1717 25	2023 25 1

Sundays

No Service

USEFUL INFO & APPS.

www.travelinesw.com

Tel: 0871 2002233

www.somerset.gov.uk

Email: transport@somerset.gov.uk

Tel: 0300 1232224

First Bus (Android and iOS) UK

Bus Checker (Android and iOS)

Build some easy exercise into your public transport journey by getting off one or two bus stops before your usual stop and walking the rest of the way. You'll be amazed at how quickly it adds up!

TOWN CENTRE BUS MAP.



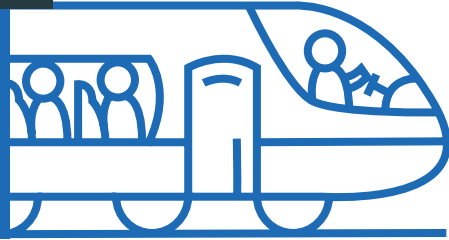
where to catch your bus in the town centre

route	bus station	Parade
route 1	H	
route 2	H	
route 3	J	
route 4	I	
route 6	I	
route 7	J	
route 9	F	
route 21/21A	D	G
route 22	B	
route 25	C	G
route 28	C	G
route 29	A	G
route 30	C	G
route 54	A	G
route 99	A	G
P&R 1	F	K



Taunton town centre

PUBLIC TRANSPORT



TRAIN.

Taunton is extremely well-located for train travel. Not only does it offer services to destinations further afield such as London and Manchester, but it also offers more local journeys to places such as Bristol, Yeovil, Bridgwater, Tiverton and Exeter.

There are a whole host of destinations within an hour's reach of Taunton railway station. Fancy a trip to the beach? Exmouth is only approximately an hour away by train. Need a bit of retail therapy? Exeter is just 25-30 minutes down the line and Bristol is just over 30 minutes up the line.

Trains provide a fast, reliable and comfortable alternative to car travel, and Taunton station is particularly well linked to the Langford Mills development by bus, cycle and pedestrian routes.

You can buy single or day returns at the station ticket office, from a ticket machine on the platform or book in advance online.

For regular travellers, season tickets are available on a weekly, monthly or annual basis. For people with mobility issues, most trains can accommodate

wheelchairs that are within the dimensions prescribed in government regulations covering public transport (700mm wide by 1200mm long). Taunton railway station provides accessible ticket machines, impaired mobility set down/pick up points, ramp for train access and staff assistance.

By booking train tickets a few weeks in advance, you can save up to 75% on journey costs.

Useful Information:

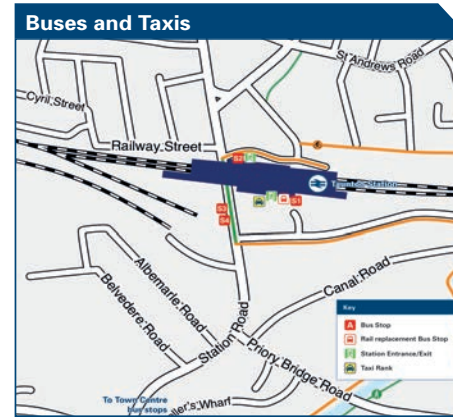
www.nationalrail.co.uk
Tel: 08457 484950

www.crosscountrytrains.co.uk
Tel: 0371 244 2389

www.disabledpersons-railcard.co.uk/travel-assistance/
Tel: 0800 022 3720
textphone/minicom
0845 60 50 600

www.gwr.com
Tel: 0345 7000125

www.thetrainline.com
Tel: 0871 2441545



Rail replacement buses/coaches will depart from the front of the station, adjacent to the taxi rank by the exit from platform 2



Taunton is a PLUSBUS area

PLUSBUS is a discount price 'bus pass' that you buy with your train ticket. It gives you unlimited bus travel around your chosen town, on participating buses. Visit www.plusbus.info

Main destinations by bus

DESTINATION	BUS ROUTES	BUS STOP
Ashcott	29	Town Centre*
Axminster	30	Town Centre*
Bampton	25	25
Bicknoller	28	31 33
Bishops Lydeard (For West Somerset Railway)	23	31 33
Bridgwater	21	Town Centre*
Burnham-on-Sea	21	Town Centre*
Chard	30, 99	Town Centre*
Chelston	22/22A	Town Centre*
Cotford St Luke	25	25
Creech St Michael	29	Town Centre*
Crowcombe	28	31 33
Dulverton	25	25
Glastonbury	29	Town Centre*
Highbridge	21	Town Centre*
Honiton	20	Town Centre*
Ilminster	30, N10	Town Centre*
Kingston St Mary	23	23
Langport	54	Town Centre*
Martock	N10	Town Centre*
Milverton	25	25
Minehead (Town & Butlins)	28	31 33
Monkton Heathfield	2, 21	Town Centre*
North Curry	51	Town Centre*

DESTINATION	BUS ROUTES	BUS STOP
North Petherton	21	Town Centre*
Norton Fitzwarren (Cross Keys)	28	31 33
Norton Fitzwarren (Village)	25	25
Othery	29	Town Centre*
Rockwell Green	22	Town Centre*
Somerton	54	Town Centre*
Stoke St Gregory	51	Town Centre*
Street	29	Town Centre*
Taunton Town area -		
• Bishop's Hull	3	Town Centre*
• Galmington	7	Town Centre*
• Holway Circular	6	Town Centre*
• Lane Estate (Laxton Road)	4	Town Centre*
• Musgrove Park Hospital	PR1, 9, 22	Town Centre*
• Priorswood	1, 2	24
• Pyrland (Ladymead Road)	1	24
• Queens College	97, 98	Town Centre*
• Sherford	97, 98	Town Centre*
• Somerset College	20, 22, 22A	Town Centre*
• Staplegrave	28	31 33
• Staplegrave	25	25
• Staplehay	97, 98	Town Centre*
• Town Centre Bus Station*	1, 2, 23, 25, 28	25
• Trull	97, 98	Town Centre*

DESTINATION	BUS ROUTES	BUS STOP
• Wellsprings	1	25
Tonedale	22A	Town Centre*
Washford	28	31 33
Watchet	28	31 33
Wellington	20, 22, 22A	Town Centre*
Wells	29	Town Centre*
Williton	28	31 33
Wiveliscombe	25	25
Yeovil	54	Town Centre*

Notes

- * PLUSBUS destination, please see below for details.
- PLUSBUS tickets are valid within the Taunton PLUSBUS zone on the Buses of Somerset and Stagecoach South West
- PLUSBUS tickets are not valid on bus routes 23, 51, 97 and 98 operated by Herts Green Coaches, or route N10 operated by Nippy Bus, or route PR1
- Routes 21, 22/22A, 29, 30, 54 and 99 depart from the Bus Station
- Routes 20, 51, 97, 98 and N10 depart from Castle Way (near Bus Station)
- Routes 3, 4, 6 and 7 depart from various stops on The Parade.
- Daily service to Musgrove Hospital PR1 - Parade stop J, or Bus Station stop F (Sundays, also routes 9 and 22 Bus Station stop F)
- For bus times and details of bus services from the Taunton, please see bus stop timetables or contact Traveline.
- Direct trains operate to this destination from this station
- * Town Centre for the Bus Station, Castle Way and The Parade bus stops, all within a few minutes walk of each other
- Blackdown Hill (AONB) www.blackdownhillaonb.org.uk

Taxis Taunton is a major station where taxis are usually available on a rank. Advance booking is not normally necessary, unless arriving early in the morning or late at night. Operators who may accept bookings include:

A1 01823 332 211 AAA Taxis 01823 257 999 Mike Adams 07527 453082 Ourtaxi 01823 333 667

Inclusion of this number doesn't represent any endorsement of the taxi firm

Further information about all onward travel

Local Info Cycle Info Bus Times NextBuses PLUSBUS

tauntondeane.gov.uk sustrans.org.uk www.traveline.info Find the bus times for your stop. plusbus.info

0871 200 22 33 0845 60 50 600

National Rail Enquiries Online NRE App Social Contact Centre Traintracker PlusBike

nationalrail.co.uk Free National Rail Enquiries app for iOS and Android facebook.com/nationalraileng 03457 48 49 50 8 49 50 nationalrail.co.uk/plusbike

GWR | Great Western Railway National Rail Britain's train companies working together

QR code for mobile app

TRANSPORT FOR PEOPLE WITH MOBILITY PROBLEMS.

Most bus services in Somerset now operate with low floor, easy access vehicles. This means that they can accommodate most wheelchairs and enable easier access for those with walking difficulties.

Somerset Accessible Transport (Tel: 01823 331266) offers a Community Transport Scheme run by Somerset County Council, including a car scheme for people with mobility problems. For eligibility criteria, please contact the team at the above number.

An accessible, demand responsive, door-to-door bus service that can be used for everything from health appointments to shopping trips. A number of SLINKY services operate in different parts of Somerset, all offering free travel to concessionary bus pass holders. To find out how to contact your local SLINKY service, visit www.somerset.gov.uk/slinky or phone 0300 123 2224.

Concessionary Bus Passes provide free bus travel, subject to certain time restrictions, to anyone of pensionable age, or who is eligible because of a disability.

You can find more information and a copy of the application form by visiting www.somerset.gov.uk/concessionary or by phoning 0300 123 2224.

SCOOTERS AND POWERED WHEELCHAIRS.

People with mobility issues who are unable to walk or cycle sufficient distances will be able to access services and facilities further afield by opting to use a scooter or powered wheelchair. The roads and footways from the site towards Taunton town centre and the local services and facilities within the area are suitable to accommodate scooters and powered wheelchairs.

Useful Resources

- Information regarding all-inclusive leasing packages for scooters and powered wheelchairs through a mobility scheme is available from the Motability Operations Ltd. Contact can be made via the website www.motability.co.uk, contact phone number (0300 456 4566) or by visiting local dealers with the nearest located in Street. Customers can also request an information pack via email or by post.
- The Research Institute for Disabled Consumers (RiDC) provides key information on a number of mobility issues including advice on scooters and powered wheelchairs via the following website link and contact number www.ridc.org.uk / Tel: 02074272460.



TAXI / UBER.

Taxis/ Ubers can form an important part of sustainable journeys.

Many taxis are now hybrids or 'green' vehicles, which help to reduce the impact of car journeys on the environment. Taxis could save you money and help to reduce your carbon footprint!

If you need to make a journey, why not share with someone else by utilising the Uber service? Uber provides a ride-hailing service where you are quoted the cost of the fare for the journey and pay before requesting the ride for convenience.

There are a number of private hire taxi operators local to Taunton, through which taxis can be pre-booked. A list of local taxi firms is included to the rear of this TIP.



USEFUL APPS

Uber (Android and iOS)

Taxicode (Android and iOS)

CAR SHARING.

Car sharing is the most sustainable way to make journeys by car. By sharing your journey with just one other person you can reduce your travel costs by 50%.

You can share cars and take it in turns to drive, or regularly use a single vehicle and contribute to the fuel cost which is a great way to save money. You can car share once a week or everyday – it's up to you.

Why Car Share?

- It reduces the number of cars on the roads, resulting in less congestion, less pollution and fewer parking problems
- It provides a real solution to the transport problems of rural areas like Somerset
- Opportunity to socialise
- Useful for people with mobility difficulties
- Reduced fuel costs
- Time to relax without driving stress

The Car Share Somerset site (www.liftshare.com/uk/community/carsharesomerset) is free and links drivers and passengers to share their journey.



DRIVING.

Get More Miles for Your Money!

Once you have considered all the other options available to you for your journey, you might realistically be left with just the one option – to drive. However, there are a number of ways through which you can both save money and fuel, which in turn helps to reduce CO₂ emissions, creating a cleaner, healthier community.

- Service your car regularly to maintain engine efficiency.
- Check your tyre pressures regularly (and before long journeys), underinflated tyres use more fuel as they increase rolling resistance.
- Lose any unnecessary baggage, extra weight means extra fuel.
- Combine short trips; cold starts use more fuel so it pays to combine your errands.
- Drive smoothly, accelerate gently and read the road ahead to avoid unnecessary braking.
- Cut down on the air-con; air-conditioning increases fuel consumption at low speeds (the effects are less noticeable at higher speeds).
- Stick to the speed limits, the faster you go the greater the fuel consumption (cruising at 70mph uses up to 9% more fuel than at 60mph and up to 15% more fuel than at 50mph).



USEFUL APPS

MPG Calc (iOS)
Basic MPG Calculator (Android)



ELECTRIC VEHICLES.

Electric Vehicles (EVs) are vehicles which use one or more electric motors for propulsion.

In regards to environmental sustainability, all plug-in vehicles provide improved fuel economy and either zero or reduced emissions. EVs offer a number of potential savings compared to conventional vehicles.

EVs can be charged in a variety of places including at home, workplace or at designated EV charging points across the UK, including at fuel stations or service stations. Zap-Map have created a map that enables EV drivers to locate and navigate to charging points across the UK. The map identifies charge points from both the major networks and smaller providers across the UK.

A Zap-Map app is available on both IOS and Android www.zap-map.com/app/.

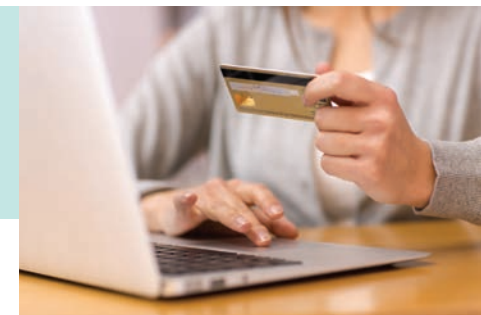
The provision of electrical charging points for electric vehicles, including bikes will be investigated by the TPC based on the on-going operational requirements of the site.

SHOPPING.

Shop & Drop or Click & Collect are both brilliant ways to save time, money and fuel.

With online shopping you can do your shop from the comfort of your own home and have it delivered at a time to suit you. Or you can collect from the store when you're out and about anyway, so no need for a specific shopping trip.

ASDA (Android and iOS)
Sainsbury's Groceries (Android and iOS)
Tesco Groceries (Android and iOS)
Ocado (Android and iOS)
MySupermarket (Android and iOS)



JOURNEY PLANNERS.



Where Do You Want To Go?

We've given you the tools to decide how to make your journey, now you can explore where you want to go.

Travel Line South West

www.traveline.info
01872 510028

First Group

www.firstgroup.com/ukbus
01823 211180

National Rail Enquiries

www.nationalrail.co.uk
08457 48 49 50

Walk4Life

www.walk4life.info

Sustrans

www.sustrans.org.uk

Cycle Streets

www.cyclestreets.net

AA Route Planner

www.theaa.com/route-planner

Google Maps

www.google.co.uk/maps

Uber

www.uber.com

AMENITIES / INFORMATION.

Odeon Cinema - Taunton

www.odeon.co.uk/cinemas/taunton
03330 144501

Blackbrook Leisure Centre

www.better.org.uk/leisure-centre/taunton-deane/blackbrook-leisure-centre-and-spa
01823 333435

Orchard Shopping Centre

www.orchardtaunton.co.uk
01823 326556

County Walk Shopping Centre

www.countywalk.co.uk
01823 283729

Taunton Library

www.somersetlibraries.co.uk/libraries/taunton-library
0300 123 2224

Musgrove Park Hospital

www.tsft.nhs.uk
01823 333444

Taunton Railway Station

www.gwr.com/plan-journey/station-sand-routes/taunton
0345 700 0125

www.busbud.com

[/taunton-bus-station](http://www.busbud.com/taunton-bus-station)
01823 272033

Tesco Taunton Superstore

www.tesco.com
0345 677 9668

Sainsburys Taunton

www.sainsburys.co.uk
01823 259602

ASDA Taunton Superstore

www.asda.com
01823 252701

TLC Taxis

www.tlctaxis.co.uk
01823 33 55 99

Taunton Taxi Services

www.taxis-in-taunton.com
01823 248248

A1 Ace Taxis

www.a1acetaxis.co.uk
01823 332211

Leo Taxis

www.leotaxis.co.uk
01823 924400

CONTACT YOUR TRAVEL
PLAN COORDINATOR
FOR DETAILS
langfordmillstpc@hydrock.com

